

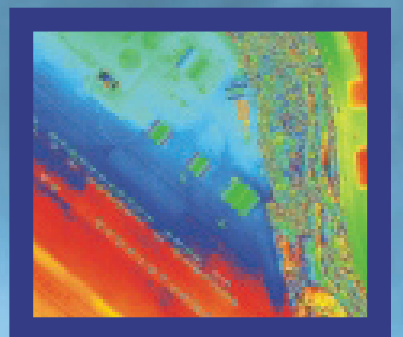
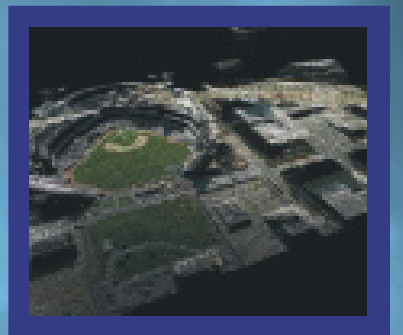
Designed to handle billions of points,
LP360 for ArcGIS will bring the benefits of
LIDAR to your desktop.

QCoherent Software
1880 Office Club Point
Colorado Springs, CO 80920, USA
01-719-386-6900
www.QCoherent.com

Try LP360 today!
A FREE Evaluation is available at
www.QCoherent.com

LP360

LIDAR Software for ArcGIS



- Load Terabytes of LIDAR
- Fast and Easy to Use
- Optimized Visualization
- Exports Contours, Grids, . . .

Try LP360 today!
A FREE Evaluation is available at www.QCoherent.com



Trademarks provided under license by ESRI. ESRI, the ESRI globe, ArcGIS, ArcMAP and ArcView are trademarks, registered trademarks or service marks of ESRI in the United States, the European Community or certain other jurisdictions. Copyright 2010 QCoherent Software.





LP360 for ArcGIS is an extension that provides the ability to create and manipulate LIDAR layers directly from industry standard LAS files without any time consuming importing or converting processes. LP360 products are not RAM sensitive and allow huge amounts of LIDAR to be loaded, merged and managed in a single LIDAR data layer. LP360 for ArcGIS provides users with the custom dockable 3D and profile windows that are required when working with high-density LIDAR datasets. With many advanced LIDAR specific functions, LP360 for ArcGIS seamlessly leverages the power of GIS with LIDAR point clouds.

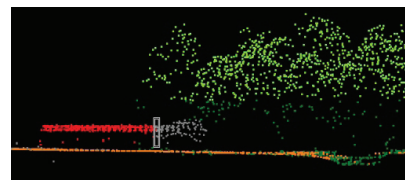
- Seamlessly manage thousands of LIDAR files and terabytes of data
- On-the-fly tinning and contouring
- Export wizard
- Specialized customizable LIDAR viewing controls
- 3D viewer
- Cross section and profile viewers
- LAS statistics and header information
- QA/QC tools

Learn more and try LP360 Today
www.QCoherent.com



The Classify module for LP360 adds easy to operate tools for classifying and editing LIDAR point clouds. LIDAR points can be driven to any LAS predefined or reserved (customizable) classification. Automated basic filters are available as are interactive classification tools in orthographic and cross-section windows. Classify can be used in combination with other ArcGIS data layers providing unique classification capabilities that leverage existing data in classification operations.

- Module for LP360 for ArcGIS
- Interactive classification tools
- Basic non-algorithmic automated classification filters and utilities
- Classify by GIS data layers and features (including 3D polygons)
- Geometry conflation operations
- LIDAR Z values and statistics conflation
- Heads-up breakline digitization tools with customizable operations
- Hydro digitizing and enforcement tools



Extractor is an LP360 module that enables a framework for classifying features in LIDAR point clouds and subsequently extracting and creating data layers from the classified points. Extractor provides users with customizable classification and extraction parameters through an easy to use Point Cloud Task management tab. Point Cloud Tasks can be single pass or multiple pass macros. Point cloud filtering and extraction algorithm settings results can be viewed prior to large scale deployment using a preview window. The interactive nature of the preview window to inspect Point Cloud Tasks in orthographic, 3D, and cross-section perspectives eliminates guesswork related to Point Cloud Task settings and increases efficiency.

- Extractor is an optional module for LP360 (requires the Classify module)
- Supports multiple pass operations and macro creation
- Extraction and classification tasks can be optimized and executed within customizable extents (e.g. polygons)
- Classifies feature points in the LIDAR point cloud (e.g. building points)
- Creates line work from classified feature points (e.g. Building outlines)
- Interactive preview window for adjusting task settings and parameters

